

Revised on:

Arthur Schnitzler

LA RONDE (REJ)

directed by: Arthur Nauzyciel

This technical rider provides only general technical requirements necessary to perform the show and may be modified at any time, depending on the venue.



GENERAL INFORMATION

Title:	La Ronde (Rej)
Author:	Arthur Schnitzler
Director:	Arthur Nauzyciel (Theatre National de Bretagne)
Producer:	National Theatre Prague
Co producer:	Theatre National de Bretagne
Cast on stage:	10 actors
Crew:	1 stage manager 1 tour manager 1 head of stage operations 1 head of stage hands 4 stage hands 1 head of electricians 1 lighting operator 1 electrician 1 sound master 2 wardrobe 2 make-up 1 surtitles operator
Dressing Room Requirements	At least 2 properly heated, clean and secured dressing rooms for 10 actors (5x ladies, 5x gentlemen) 2 rooms for make up (ladies/gentlemen) 1 room – production 1 room technical stuff
Catering	Please provide modest assortment of drinks (fruit juices, mineral water, coke) and assortment of fruit and healthy snacks
Seating restrictions	There must be one place reserved in the audience for one of the actors
Laundry and ironing	Please provide a costume assistant for possible washing and ironing before and after rehearsals and performances
Show runtime:	130 minutes
Intermission:	none

TECHNICAL REQUIREMENTS

STAGE:

Masking: black sides – L and R

Minimum Stage Dimensions 16 m wide x 14 m depth

- Proscenium borders distance min. 9 m
- Apron min. 6 m
- Portal bridge free height min. 7,5 m
- Flies high min. 16 m
- Upstage min. 6 m wide x 7 m depth

Flybars Standard flybars with minimum load capacity 250 Kg

For the construction of the main part of the set („Arc de Triomphe“) is required the traction equipment with a total load capacity of 2000 kg (it is advantageous to use more pieces of hoist points)

This device is used for assembling and lifting the decoration only. After lifting and assembling, the entire object is independent, that why the lift speed is not specified.

Use of Main Curtain yes, black velvet in 2 pieces, american opening

Set changes during the performance yes (map lifted by flybars + tram moving back and forward)

Intercom Requirements Possibility of loud calls to the actors' dressing rooms and other areas of the theatre + communication with electrician and sound master (stage manager)
Monitor with scene image (optional)
Wireless communication on stage – 4 pcs

!! In the case of implementation on another stage, the technical visit of the venue is required!!

The staging and travelling crew can be partially optimized according to the venue

SET DESCRIPTION:

The production is designed for the "peephole" theater space. On the stage behind the portal the decoration in the form of a "Arc de Triomphe" is erected. A tram moves forward from the back of the stage through the center of the arch and back. The stage is divided by a prospectus (map). The action takes place mainly in the front part of the stage (in front of the arch).

Stage Floor	It must be possible to drill into the stage floor
Arc de Triomphe	Main central part of the set
Map	To hang the scenic prospectus (map), a flybar of minimum load capacity of 250 kg is required. The map is stretched in a frame measuring (w x h) 14 x 12 m. ! It goes up and down several times during the show !
Tram	Part of the set design It runs through the center of the stage from the back to the "Arc de Triomphe". Tracks screwed into the floor maintain the straight direction. Self-drive is ensured by a motor with electronic control. Motor power supply 380V/16A/5P. Total weight of the tram – 1000 kg
Special effects	Hazer + Fog machine

SURTITLING:

Projection on two screens (one on each side of the stage)
We bring our operator with laptop - HDMI input (**please provide spare laptop**)
Software „SPECTITULAR“ by PANTHEA
The performance is in Czech. Please contact the production manager concerning the realisation of the surtitles in different language(s) that Organizer wants to have displayed. We have English and French surtitles already available.

PROPS:

Fresh lily flowers - 8 pieces, white or light rose colour

LOGISTICS & LOADING:

Parking to be provided for:	1 trailer truck (15 meters long) 1 lorry (7 meters long)
The transport route:	The stage must allow the transport of decorations with a maximum size of 660 cm x 225 cm x 60 cm

TECHNICAL ASSISTANCE to be provided by the VENUE

	Setup in/out		Performance	
Head of stage	1		1	
Stage hands	6		1	
Flayman/Rigging operator	2		1-2	
Head of electricians	1		1	
Lighting operator	1		1	
Electricians	2			
Head of soundmasters	1		1	
Wardrobe	1		1	
MakeUp	1		1	

NOTE: The technicians provided by the Venue must be experienced technicians and be familiar with the lighting, sound and other technical eqt. Provided by and through Venue

LIGHTING EQUIPMENT:

U#	Pcs.	Instrument type	Accessory and more information	Wattage / pcs.	We bring from NT	Provided by the VENUE	notes
----	------	-----------------	--------------------------------	----------------	------------------	-----------------------	-------

FOH - LIGHTING BOTH

1	1	lighting desk GrandMA3			1		we need communications between lighting both and stage manager
---	---	------------------------	--	--	---	--	--

FOH - HOOKUP

2	5	ROBE T1 Profile		600kW / 1pcs.		5	
---	---	-----------------	--	---------------	--	---	--

STAGE - HOOKUP

3	3	ROBE Forte		1kW / 1pcs		3	
4.	5	CYC light	5cps. Gel L161	1kW / 1pcs.		5	

STAGE - FLOOR

5	3	LED strips RGB CW WW	edge of down stage	500W / 1pcs.	1		we need no dimming 220V and DMX 5PIN cables
6	6	LDDE NanoPix Slim FR 1440	lies in front of the arch	80W / 1pcs.		6	
7	1	MDG hazer				1	
8	2	HMI fresnel	Shutte, Barn4D, floor stand	2,5kW / 1pcs.		2	
9	2	CYC light	2pcs. Gel L202	1kW / 1pcs.		2	
10	1	ROBE fog machine		2kW / 1pcs		1	

TROLLEY

13	1	LED strips RGB CW WW		500W / 1pcs.	1		we need no dimming 220V and DMX 5PIN cables on the wall on the up stage. We bring long cables for Trolley.
14	1	1CH dimmer for PAR64, CP95		1kW / 1pcs.	1		
15	1	Engine for Trolley		16A 380V	1		we need cables 380V 16A on the wall on the up stage. We bring long cable for Trolley

Power cables 380V, 220V and DMX cables

WE NEED ALL DMX AND POWER CABLES FOR LIGHTS AND EQUIPMENT TO BE PROVIDED BY THE VENUE except cables for the Trolley which we bring with us.

Power socket for engine in the Trolley
380V 16A



Power socket for HMI and for lights in the
Trolley
220V 16A



WE NEED ALL DMX AND POWER CABLES FOR LIGHTS AND EQUIPMENT TO BE PROVIDED BY THE VENUE except cables for the Trolley which we bring with us.

SOUND EQUIPMENT:

PROVIDED BY THE VENUE

FOH:

- L/C/R (for exmple in Estates Theatre
L'Acoustic - 9xKIVAII/10xKIVA II/9xKIVAII)
- SUB (for exmple in Estates Theatre
L'Acoustic – 4x SB15M)

STAGE SPEAKERS:

- 3x 300W
 - L+C+R speakers on the bridge between the portals
playing towards the stage
- 2x 300W
 - L+R sidefills
- 3x 400W
 - rear L+C+R playing from the back of the stage
towards the auditorium

SURROUND:

L/R

PROVIDED BY NATIONAL THEATRE

MIXING DESK:

Digico SD12 with DANTE connections or analog connections
through DiGiCo D-Rack or Digico SD11 +DiGiCo D-Rack with
analog connections

PLAYBACK:

iMac computer
MADI/USB soundcard
Qlab multitrack playback software

RISK ANALYSIS:

Set Elements Fire Risk:	The set elements meet the requirements
Effects:	We use smoke and smell effects during the performance and spotlight shining into the audience.
Open flame:	No
Firearms	No
Smoking:	No
Hazardous/Dangerous Items:	No

CONTACTS:

Production manager:	Klára Golay	+420 773 542 384 k.golay@narodni-divadlo.cz
Head of stage operations:	Petr Stříbrný	+420 603 718 223 p.stribny@narodni-divadlo.cz
Head of master electrician:	Přemysl Janda	+420 604 473 195 p.janda@narodni-divadlo.cz
Head of sound master:	Martin Zrůstek	+420 731 014 971 m.zrustek@narodni-divadlo.cz
Head of wardrobe:	Alice Šlegrová	+420 602 846 010 a.slegrova@narodni-divadlo.cz
Head of make-up:	Michaela Táborská	+420 778 766 047 m.taborska@narodni-divadlo.cz

ATTACHMENTS:

Attachments No_1	Ground Plan_A3_M100 Section Plan_A3_M100
Attachments No_1	LT_Plot

Panorama storage area
V - vertical marking
H - horizontal marking
B - vertical light

Manual bar hoists 01 - 49
load-bearing capacity 250 kg
lifting speed 0.05 - 1.2 m/s
lifting height 14.00 m (profile - pit 1000x3)
lifting height 21.12 m

40
47 h
46
44
44
42
42
41
39 h
38
37
35
34
33
32
30 h
29 h
28
27
26
25
24
23
22
21
20
19
18
17
16
15
14
13
12
11
10
9
8
7
6
5
4
3
2
1

Lighting set up

Aves of spot hoists
(M1 - M15)
load-bearing capacity 500 kg
lifting speed 0.05 - 1.2 m/s
lifting height 12.45 m
computer controlled
M12.50 m

Revolving stage table
dia 12.32 m, 0 - 1.0 m/sec
computer controlled
load-bearing capacity during rotation 100kg/m2
no rotation 300kg/m2

Traps
floor traps in stage revolving plate
consists of 40 removable windows
size 2.00 x 1.00 m each
3 hydraulic floor lifts
lifting speed 0.30 m/s
computer controlled
max. load 500 kg

40
47 h
46
44
44
42
42
41
39 h
38
37
35
34
33
32
30 h
29 h
28
27
26
25
24
23
22
21
20
19
18
17
16
15
14
13
12
11
10
9
8
7
6
5
4
3
2
1

Proscenium hoist bar,
height 7.60 m
load-bearing capacity 500 kg
lifting speed 0 - 1 m/s
Bobbins, speed 0.5 m/s
iron curtain

Spot lines of orchestra pit
load-bearing capacity 250 kg
lifting speed 0.05 - 0.50 m/s
overall height 12.45 m
spot lines can be spread

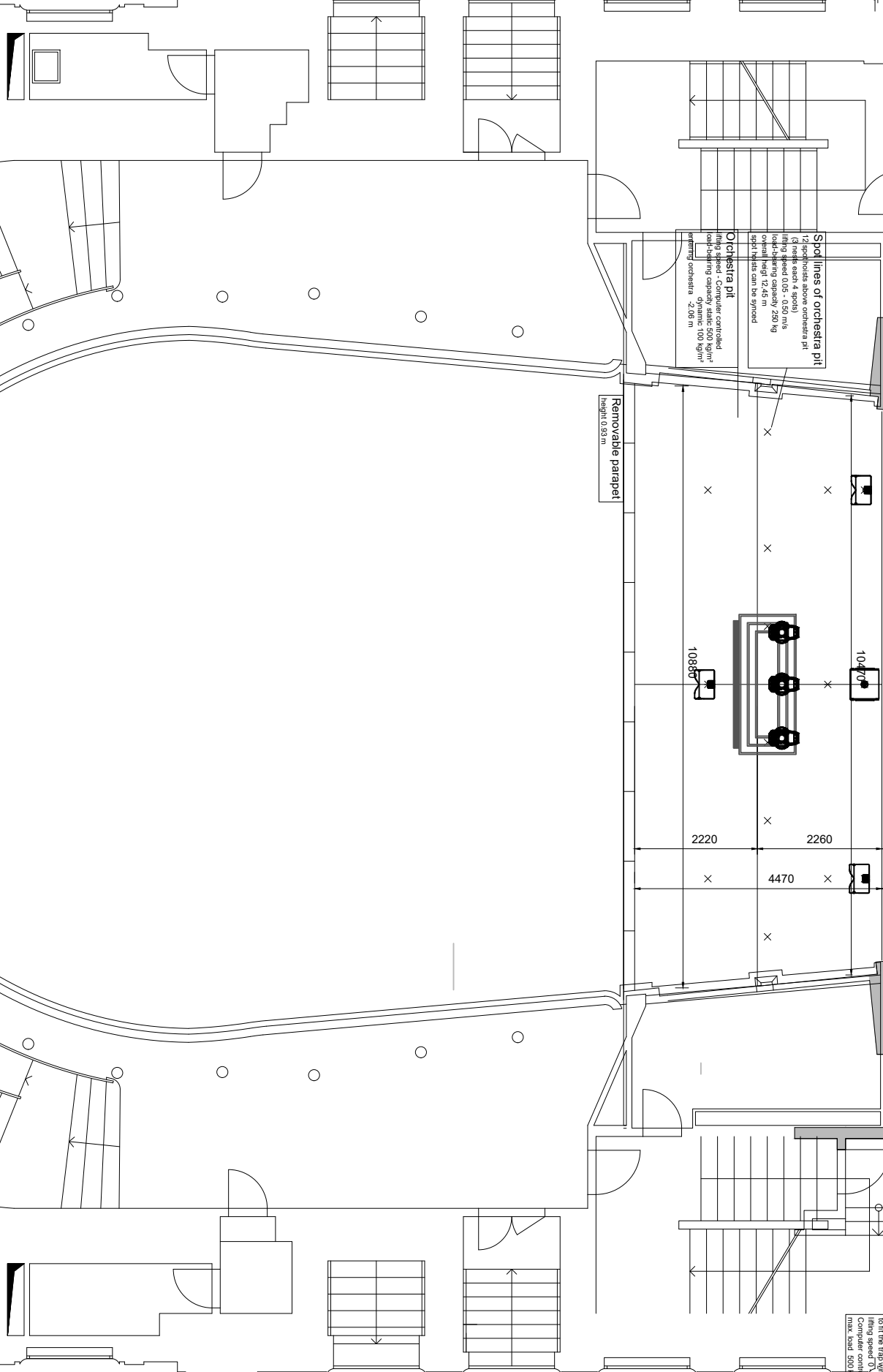
Orchestra pit
load-bearing capacity 500 kg/m2
dynamic 100 kg/m2
lifting speed 2.00 m

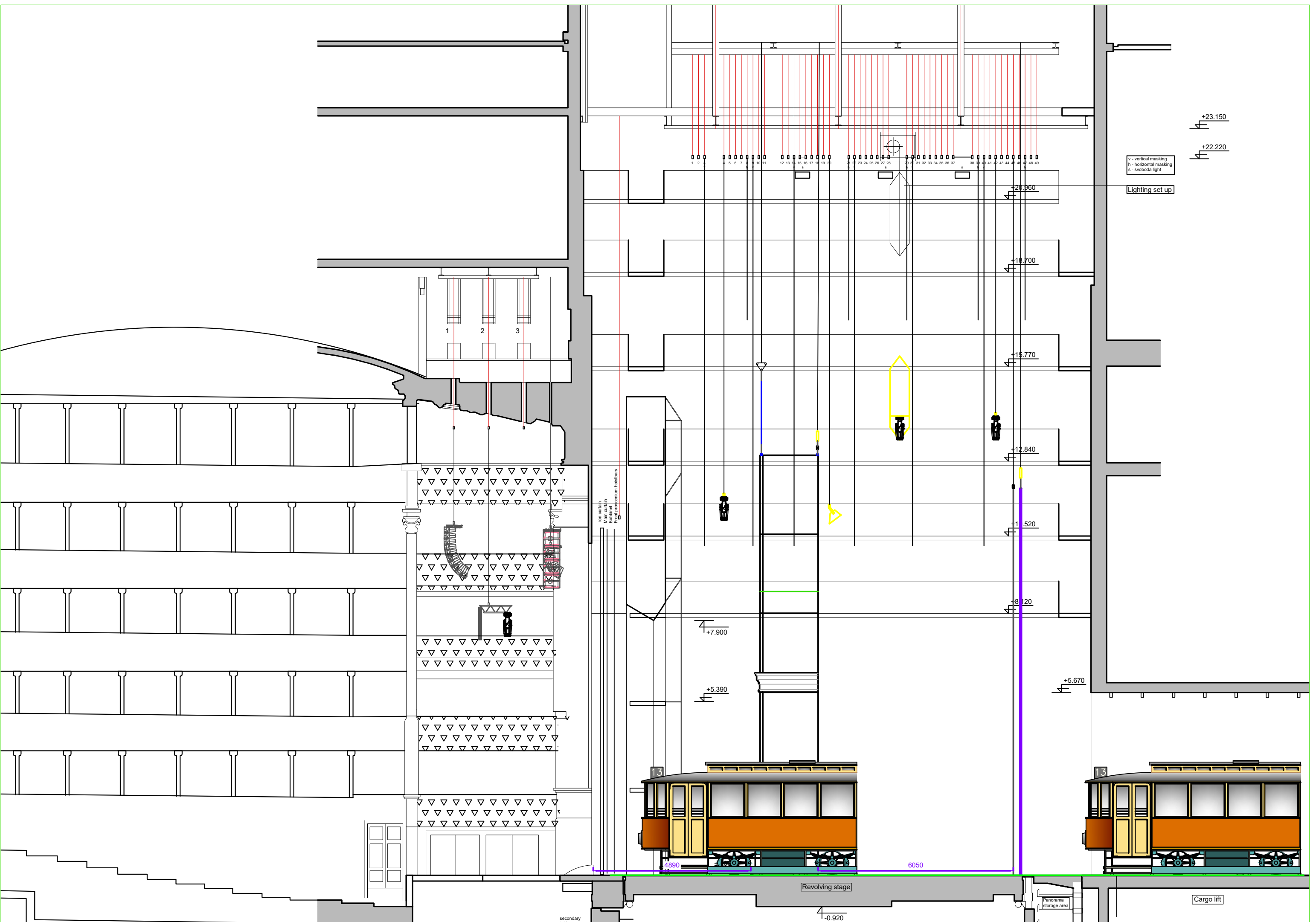
Removable parapet
height 0.93 m









3570
4880
440
338
6
Talent mix
storage
decorations
8290
8010

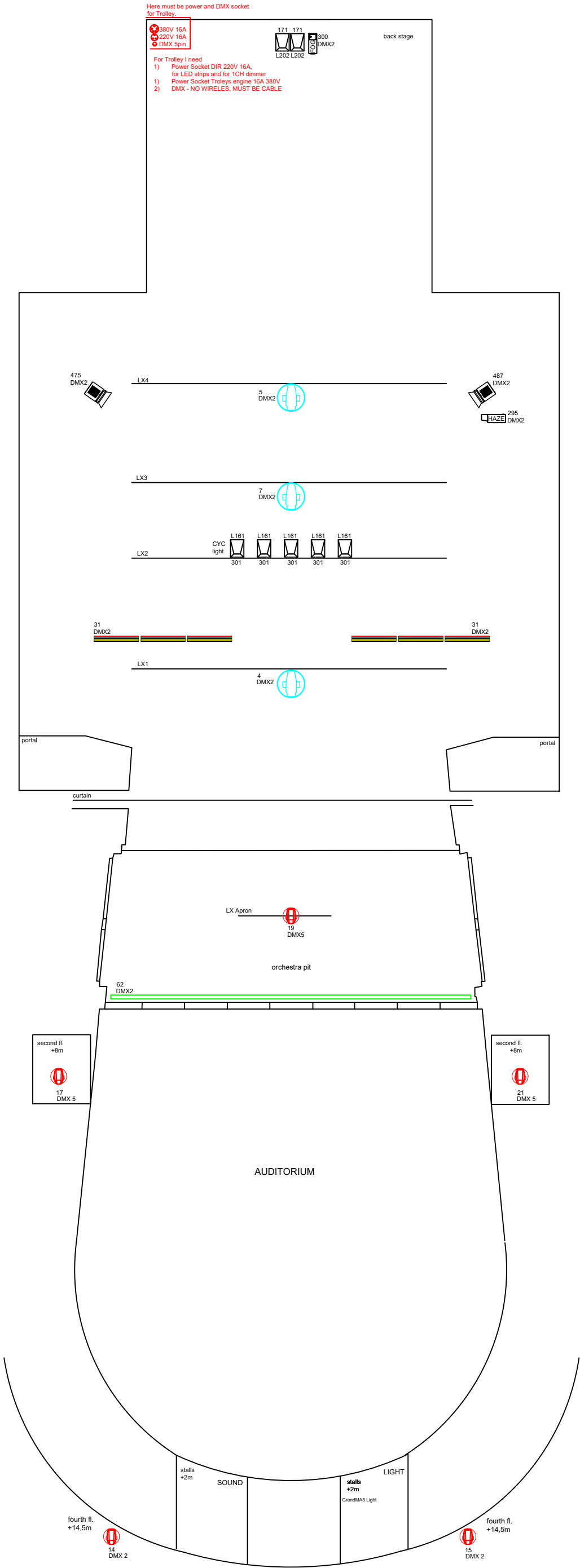
1450
400
14980
18820
12320
16610
1000
2700
9810
30000

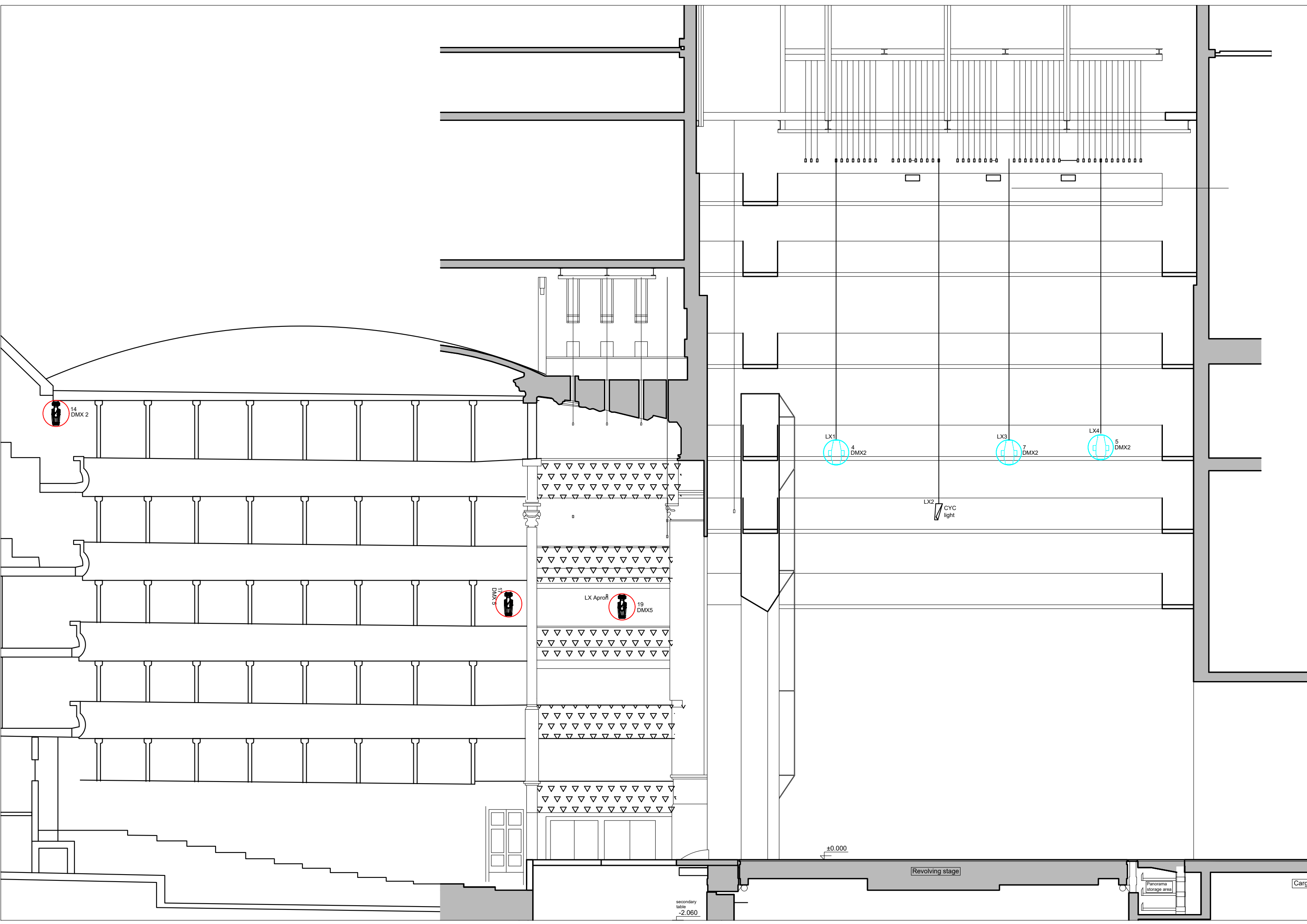
4310
900
9560
4340
2160
2260
4470
2220
10860





LEGEND - lights and DMX control unit.			
NAME	SYMBOL	QUANTITY	GELS + QUANTITY
CYC Flood asymmetric 1kW		7PCS.	5PCS. L161 2PCS. L202
HMI 2.5kW , B4D, COL. CHANGER, FLOOR STAND		2PCS.	MAG VADER MV300 L130, L026, L154
ROBE Forte		3PCS.	
ROBE T1 Profile		3PCS.	
LDDE NanoPix Slim FR 1440		6PCS.	
LED Strips RGBCW			
FOG Machine			
MDG Atme			





14
DMX 2

17
DMX 3

LX Aprofi
19
DMX 5

LX 1
4
DMX 2

LX 3
7
DMX 2

LX 4
5
DMX 2

LX 2
CYC
light

±0.000

Revolving stage

Panorama
storage area

Carg

secondary
table
-2.060